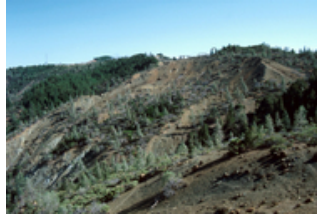


## Report for *Eriogonum nervulosum*

### TAXON DETAILS



© Rick York and CNPS



© Roxanne Bittman and CNPS

### Classification

**Scientific Name**  
**Common Name**  
**Family**  
**Element Code**  
**USDA Plants Symbol**  
**Synonyms/Other Names**

*Eriogonum nervulosum* (S. Stokes) Rev.  
Snow Mountain buckwheat  
Polygonaceae  
PDPGN08440  
ERNE8

### Conservation Status

<b>California Rare Plant Rank</b>	1B.2
<b>Global Rank</b>	G2
<b>State Rank</b>	S2
<b>CESA</b>	None
<b>FESA</b>	None
<b>Other Status</b>	BLM_S; SB_CalBG/RSABG; SB_SBBG; USFS_S
<b>CRPR Changes</b>	
<b>Date Added</b>	1980-01-01
<b>Last Update</b>	2021-05-26

### Ecology and Life History

<b>Lifeform</b>	perennial rhizomatous herb
<b>Blooming Period</b>	Jun-Sep
<b>Elevation m (ft)</b>	300-2105 (985-6905)
<b>General Habitats</b>	Chaparral (serpentine)
<b>Microhabitat Details</b>	
<b>Microhabitat</b>	

### Threat List Data from the CNDDDB

<b>Threat List Total:</b>		4
	<b>Total EOs</b>	<b>Percent EOs</b>
<b>EOs with Threats Listed</b>	<b>3</b>	<b>33%</b>
<b>Threat List:</b>		
Development	1	11%
Mining	1	11%
ORV activity	1	11%
Road/trail construction/maint.	1	11%

### Element Occurrence Data from the CNDDDB

<b>Total Element Occurrences:</b>	9
<b>Element Occurrence Ranks:</b>	
Excellent (A)	4
Good (B)	2
Fair (C)	0
Poor (D)	0
None (X)	0
Unknown (U)	3
<b>Occurrence Status</b>	
Historical, > 20 years	6
Recent, < 20 years	3
<b>Presence</b>	
Presumed Extant	9
Possibly Extirpated	0
Presumed Extirpated	0

### Location

<b>California Endemic</b>	Yes
---------------------------	-----

#### **Counties**

Colusa (COL), Glenn (GLE), Lake (LAK), Napa (NAP), Sonoma (SON)
---

#### **States**

California (CA)
-----------------

#### **Quads**

Crockett Peak (3912247), Gilmore Peak (3912235), Hough Springs (3912225), Jericho Valley (3812274), Knoxville (3812273), Leesville (3912224), Mount St. Helena (3812266), St. John Mtn. (3912246), Whispering Pines (3812276), Wilson Valley (3812284)
--

#### **Notes**

Definitions of codes preceding a county and/or quad:

\* Presumed extirpated

(\*) Possibly extirpated

Species may be present in other areas where conditions are favorable. These data should NOT be substituted for pre-project review or for on-site surveys.

## **Notes**

Known from fewer than twenty occurrences. Threatened by energy development, mining, and vehicles. See *Phytologia* 40:467 (1978) for revised nomenclature and 66(4):350 (1989) for taxonomic treatment.

## **Threats**

## **Taxononmy**

## **Selected References**

**Other:** USFS Potential Species of Conservation Concern Profile

## **Suggested Citation**

California Native Plant Society, Rare Plant Program. 2024. Rare Plant Inventory (online edition, v9.5). Website <https://www.rareplants.cnps.org> [accessed 1 May 2024].