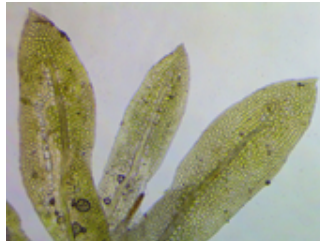


Report for *Fissidens pauperculus*

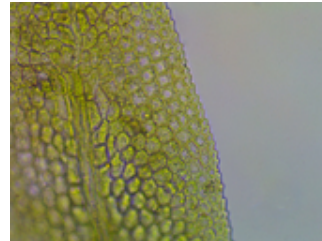
TAXON DETAILS



©2021 Scot Loring



© 2021 Scot Loring



© 2021 Scot Loring

Classification

Scientific Name	<i>Fissidens pauperculus</i> Howe
Common Name	minute pocket moss
Family	Fissidentaceae
Element Code	NBMUS2W0U0
USDA Plants Symbol	<u>FIPA5</u>
Synonyms/Other Names	

Conservation Status

California Rare Plant Rank	1B.2
Global Rank	G3?
State Rank	S2
CESA	None
FESA	None
Other Status	USFS_S
CRPR Changes	
Date Added	2001-01-01
Last Update	2021-05-26

Ecology and Life History

Lifeform	moss
Blooming Period	
Elevation m (ft)	10-1024 (35-3360)
General Habitats	North Coast coniferous forest (damp coastal soil)
Microhabitat Details	
Microhabitat	

Threat List Data from the CNDDDB

Threat List Total:		4
	Total EOs	Percent EOs
EOs with Threats Listed	5	23%
Threat List:		
Improper burning regime	3	13%
Logging	2	9%
Road/trail construction/maint.	2	9%
Erosion/runoff	2	9%

Element Occurrence Data from the CNDDDB

Total Element Occurrences:	22
Element Occurrence Ranks:	
Excellent (A)	0
Good (B)	3
Fair (C)	1
Poor (D)	0
None (X)	0
Unknown (U)	18
Occurrence Status	
Historical, > 20 years	17
Recent, < 20 years	5
Presence	
Presumed Extant	22
Possibly Extirpated	0
Presumed Extirpated	0

Location

California Endemic	No
---------------------------	----

Counties

Alameda (ALA), Butte (BUT), Del Norte (DNT), Humboldt (HUM), Marin (MRN), Mendocino (MEN), San Mateo (SMT), Santa Cruz (SCR), Sonoma (SON), Yuba (YUB)

States

California (CA), Oregon (OR)

Quads

Arcata North (4012481), Arcata South (4012471), Bailey Ridge (3912324), Big Basin (3712222), Briones Valley (3712282), Brush Creek (3912163), Challenge (3912142), Clipper Mills (3912152), Duncans Mills (3812341), Felton (3712211), Fern Canyon (4112441), Forbestown (3912153), Fortuna (4012452), Franklin Point (3712223), Hiouchi (4112471), La Honda (3712233), Laurel (3712118), Mindego Hill (3712232), Oakland East (3712272), Orick (4112431), San Rafael (3712285)

Notes

Definitions of codes preceding a county and/or quad:

* Presumed extirpated

(*) Possibly extirpated

Species may be present in other areas where conditions are favorable. These data should NOT be substituted for pre-project review or for on-site surveys.

Notes

See *Erythea* 2:97-101 (1894) for original description.

Threats

Taxononmy

Selected References

Suggested Citation

California Native Plant Society, Rare Plant Program. 2024. Rare Plant Inventory (online edition, v9.5). Website <https://www.rareplants.cnps.org> [accessed 20 May 2024].