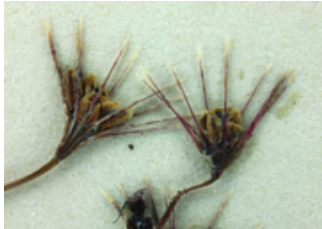


Report for *Acanthoscyphus parishii* var. *abramsii*

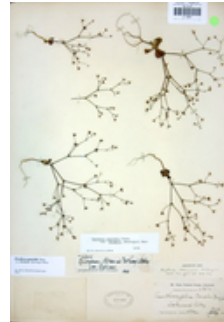
TAXON DETAILS



© 2007 Steve Matson



© 2007 Steve Matson



© 2007 Steve Matson

Classification

| | |
|----------------------|--|
| Scientific Name | <i>Acanthoscyphus parishii</i> (Parry) Small var. <i>abramsii</i> (E.A. McGregor) Reveal |
| Common Name | Abrams' oxytheca |
| Family | Polygonaceae |
| Element Code | PDPGN0J041 |
| USDA Plants Symbol | |
| Synonyms/Other Names | <u><i>Oxytheca parishii</i> Parry var. <i>abramsii</i> (McGregor) Munz</u> |

Conservation Status

| | |
|----------------------------|------------|
| California Rare Plant Rank | 1B.2 |
| Global Rank | G4?T1T2 |
| State Rank | S1S2 |
| CESA | None |
| FESA | None |
| Other Status | USFS_S |
| CRPR Changes | |
| Date Added | 1994-01-01 |
| Last Update | 2022-01-05 |

Ecology and Life History

| | |
|----------------------|--------------------------|
| Lifeform | annual herb |
| Blooming Period | Jun-Aug |
| Elevation m (ft) | 1143-2057 (3750-6750) |
| General Habitats | Chaparral (sandy, shale) |
| Microhabitat Details | |
| Microhabitat | |

Threat List Data from the CNDDDB

| | | |
|--------------------------------|------------------|--------------------|
| Threat List Total: | | 1 |
| | Total EOs | Percent EOs |
| EOs with Threats Listed | 1 | 14% |
| Threat List: | | |
| Road/trail construction/maint. | 1 | 14% |

Element Occurrence Data from the CNDDDB

| | |
|-----------------------------------|---|
| Total Element Occurrences: | 7 |
| Element Occurrence Ranks: | |
| Excellent (A) | 1 |
| Good (B) | 0 |
| Fair (C) | 0 |
| Poor (D) | 0 |
| None (X) | 0 |
| Unknown (U) | 6 |
| Occurrence Status | |
| Historical, > 20 years | 6 |
| Recent, < 20 years | 1 |
| Presence | |
| Presumed Extant | 7 |
| Possibly Extirpated | 0 |
| Presumed Extirpated | 0 |

Location

| | |
|---|-----|
| California Endemic | Yes |
| Counties | |
| Santa Barbara (SBA), Ventura (VEN) | |
| States | |
| California (CA) | |
| Quads | |
| Big Pine Mtn. (3411966), Cuddy Valley (3411971), Figueroa Mtn. (3411968), Lockwood Valley (3411961), Reyes Peak (3411963), San Rafael Mtn. (3411967), Topatopa Mountains (3411951), Wheeler Springs (3411953) | |

Notes

Definitions of codes preceding a county and/or quad:

* Presumed extirpated

(*) Possibly extirpated

Species may be present in other areas where conditions are favorable. These data should NOT be substituted for pre-project review or for on-site surveys.

Notes

See *Bulletin of the Torrey Botanical Club* 36: 605 (1909) for original description, *Harvard Papers in Botany* 9(1): 144 (2004) for revised nomenclature, and *Brittonia* 32(1): 70-102 (1980) and *Phytologia* 66(4): 386-87 (1989) for taxonomic treatments.

Threats

Taxonomy

Selected References

Suggested Citation

California Native Plant Society, Rare Plant Program. 2024. Rare Plant Inventory (online edition, v9.5). Website <https://www.rareplants.cnps.org> [accessed 27 April 2024].