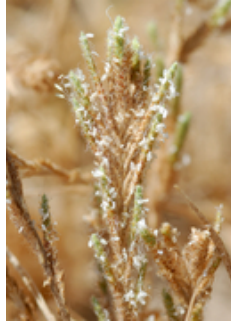


## Report for *Orcuttia pilosa*

### TAXON DETAILS



© 2003 George W. Hartwell



© 2011 Chris Winchell



© 2010 Chris Winchell

### Classification

Scientific Name	<i>Orcuttia pilosa</i> Hoov.
Common Name	hairy Orcutt grass
Family	Poaceae
Element Code	PMPOA4G040
USDA Plants Symbol	<u>ORPI</u>
Synonyms/Other Names	

### Conservation Status

California Rare Plant Rank	1B.1
Global Rank	G1
State Rank	S1
CESA	CE (09/01/79)
FESA	03/26/97 (03/26/97)
Other Status	SB_CaIBG/RSABG
CRPR Changes	
Date Added	1980-01-01
Last Update	2021-05-26

### Ecology and Life History

Lifeform	annual herb
Blooming Period	May-Sep
Elevation m (ft)	46-200 (150-655)
General Habitats	Vernal pools
Microhabitat Details	
Microhabitat	

## Threat List Data from the CNDDDB

<b>Threat List Total:</b>		11
	<b>Total EOs</b>	<b>Percent EOs</b>
<b>EOs with Threats Listed</b>	<b>31</b>	<b>86%</b>
<b>Threat List:</b>		
Agriculture	18	50%
Grazing	17	47%
Non-native plant impacts	9	25%
Disking	8	22%
Development	5	13%
Altered flood/tidal/hydrologic regime	4	11%
Foot traffic/trampling	3	8%
Road/trail construction/maint.	2	5%
Erosion/runoff	1	2%
ORV activity	1	2%
Other	1	2%

## Element Occurrence Data from the CNDDDB

<b>Total Element Occurrences:</b>	36
<b>Element Occurrence Ranks:</b>	
Excellent (A)	3
Good (B)	9
Fair (C)	4
Poor (D)	3
None (X)	15
Unknown (U)	2
<b>Occurrence Status</b>	
Historical, > 20 years	22
Recent, < 20 years	14
<b>Presence</b>	
Presumed Extant	21
Possibly Extirpated	7
Presumed Extirpated	8

## Location

<b>California Endemic</b>	Yes
<b>Counties</b>	
Glenn (GLE), Madera (MAD), Merced (MER), Stanislaus (STA), Tehama (TEH)	
<b>States</b>	
California (CA)	
<b>Quads</b>	

---

Cooperstown (3712065)\*, Daulton (3711918), Gregg (3611988), Herndon (3611978), Kismet (3712011)\*, Lanes Bridge (3611987), Logandale (3912242), Madera (3612081), Merced (3712034), Montpelier (3712056), Paulsell (3712066)\*, Richardson Springs NW (3912188), Turlock Lake (3712055), Vina (3912281), Yosemite Lake (3712044)\*

---

## Notes

Definitions of codes preceding a county and/or quad:

\* Presumed extirpated

(\*) Possibly extirpated

Species may be present in other areas where conditions are favorable. These data should NOT be substituted for pre-project review or for on-site surveys.

## Notes

Seriously threatened by agriculture, urbanization, overgrazing, non-native plants, and trampling. See *Bulletin of the Torrey Botanical Club* 68:155 (1941) for original description, and *American Journal of Botany* 69:1082-1095 (1982) for taxonomic treatment.

## Threats

## Taxononmy

## Selected References

## Suggested Citation

California Native Plant Society, Rare Plant Program. 2024. Rare Plant Inventory (online edition, v9.5). Website <https://www.rareplants.cnps.org> [accessed 2 May 2024].